

# Erasmus Brussels

University of Applied Sciences and Arts

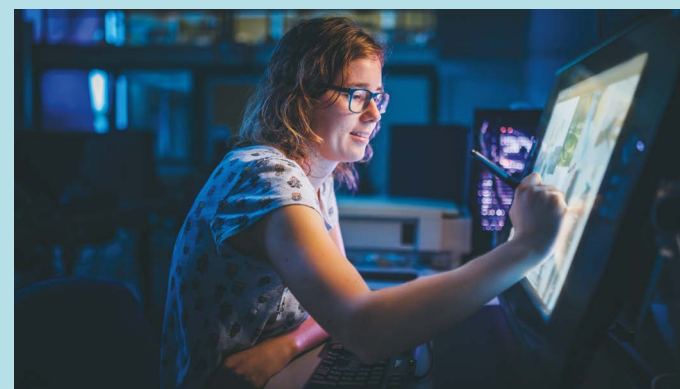
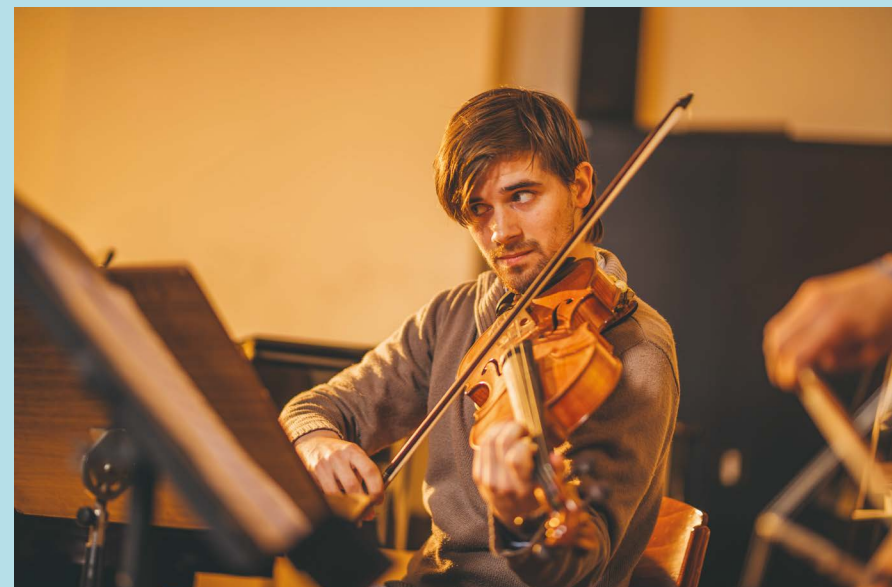


erasmus

HOGESCHOOL BRUSSEL

# Content

- 5 / Welcome
- 6 / Facts & Figures
- 8 / Study Programs
- 24 / Practice Oriented Research
- 25 / Internationalization
- 27 / Where to find us



Produced by  
Erasmushogeschool Brussel  
Nijverheidskaai 170  
1070 Brussels

Editor  
Ann Brusseel, President

October 2019





# Welcome

Erasmus Brussels University of Applied Sciences and Arts (Erasmushogeschool Brussel, EhB) is a Flemish higher education institution located in and around Brussels. We offer a wide range of professionally oriented programs at the **associate and bachelor degree** level as well as **bachelor and master degree programs in the arts** within our Film & Theatre Institute (RITCS) and our Music Conservatory (Koninklijk Conservatorium Brussel).

When developing our programs, we regularly consult with leading businesses and organizations in order to ensure state of the art programs capable of delivering graduates ready for the **21st century** labor market. Our programs in the arts are deeply embedded in the surrounding Brussels' art scene.

Artistic and academic research is carried out by research groups within our Schools of Arts whereas our practice based research, which is often multidisciplinary in character, is grouped together in several **Centers of Expertise**. We encourage students to partake in ongoing research, thus sharpening their inquisitiveness and fostering an attitude of innovation in them. We have made our student support services readily available on each of our campuses in order to create easy access and contribute to students' comfort and sense of well-being.

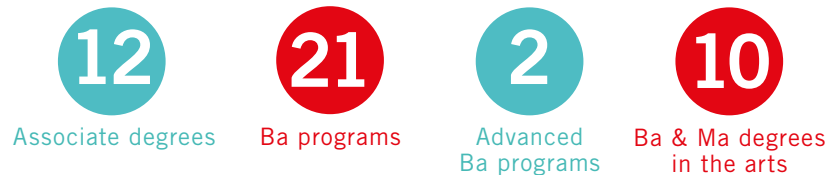
We strongly believe in the power of an international experience in every individual's career and life as an excellent way to develop professional networks and establish job opportunities internationally. We offer a range of grants to both students and staff to participate in international mobility programs for study or traineeship and in international projects, both inside and outside of the European Union.

**ehb.be/international**



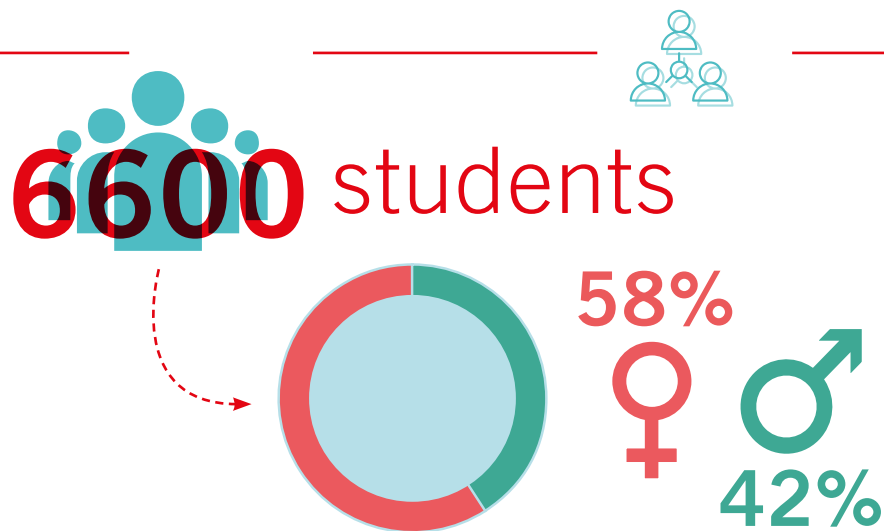


# Facts & Figures



**11** campuses  
in and around Brussels

**600** staff members (FTE)  
of which 400 academic staff members



**82%**

of our graduates finds **a job within 6 months** after graduation

**78%**

of our graduates experienced **Brussels as an added value**

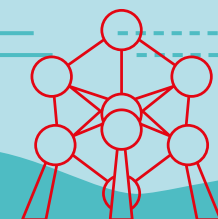
**18%**

of our graduates have had **an experience abroad**

Currently participating in **13 Erasmus+ projects**  
in **10 key areas:**

education & care – nursing & midwifery – health care & wellbeing – artificial intelligence – landscaping & public space – DIY biology – future & foresight studies – youth empowerment – artistic research

✕ EhB holds an **Erasmus Charter for Higher Education (ECHE)**.





## Climate, Nature and Design

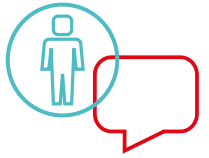
- Bachelor in Landscape and Garden Architecture



Recognized by the International Federation of Landscape Architects (IFLA), our program focuses on designing our living environment, from gardens to parks and squares, from urban to rural landscapes, with particular emphasis on **aesthetics, climate, sustainability and quality of life**.

## Research

Through practice-oriented design research Tuin+ develops innovative strategies for the planning, design and management of private, semiprivate and semi-public open and green spaces.



## Communication, Media and Languages


- Associate Degree in Marketing
- Bachelor in Communication Management
- Bachelor in Journalism
- Bachelor in Office Management

The underlying teaching philosophy in these programs is geared towards empowering students as individuals while acquiring **strategic creative and management skills**. The programs have a broad general scope on their field of study, thus preparing students to work in various types of organizations. **Teamwork**, problem based case studies, real company briefings and various work placements are essential to these programs. Our graduates are quickly employed upon graduation.





# ICT, Technology and Web

- Associate Degree in Electromechanical Systems
  - Associate Degree in Information Technology: Computer Network and System Administration
  - Associate Degree in Internet of Things
  - Associate Degree in Programming
- 
- Bachelor in Applied Computer Science (Dig-X)
  - Bachelor in Multimedia & Communication Technology (Multec)

We prepare students to work in the core areas of ICT such as network and system infrastructure, programming, business IT, information management and software engineering. In addition, they can also focus on new multimedia products and services. By blending theoretical and practical knowledge, students develop analytical thinking and project management skills. To develop their own interaction design, students can work in our cutting edge **MediaLab and FabLab**.

## Research

Our research in **User Centered Artificial Intelligence** focuses on the integration of state-of-the-art technologies, such as Machine Learning, Internet of Things and Augmented Reality, into user-oriented applications and services. Researchers and students are involved in the conceptual and technical design of these ecosystems. This is often done at the request of SMEs and manufactured in our own labs: MediaLab, Open DeviceLab and FabLab. Our close collaboration with the private sector and universities guarantees **state of the art curricula** and **labor market** ready graduates.



“

The increase in mobile application development businesses and start-ups is phenomenal. The Belgian educational system is an important driving force in this growth. In particular the app-education at Erasmushogeschool Brussel is outstanding and has reached world level. Something to be very proud of!

*Tanguy De Lestré, Agoria\**

\*Agoria is the biggest lobbying organization in Flanders defending the interest of 1700 businesses in the technological industry.

# Health Care, Nutrition and Lab



- Associate Degree in Nursing
- Bachelor in Biomedical Laboratory Sciences
- Bachelor in Midwifery
- Bachelor in Nursing
- Bachelor in Nutrition and Dietetics
- Advanced Bachelor in Pediatrics and Neonatal healthcare
- Advanced Bachelor in Care Management

To train our health care professionals we use **evidence-based teaching methods** and have a hands-on approach. Students in biomedical laboratory sciences develop their skills and professional attitude in state-of-the-art labs. In the nutrition and dietetics program, a problem-based way of thinking is central in approaching the patient.

To be optimally prepared for subsequent traineeships in real medical settings, student nurses, midwives, doctors and specialists train essential competences in our **Skills and Simulation Center**, a lifelike yet safe simulation environment.



## Research

Finding solutions to future challenges in our health care system is what our research unit **Brussels Integrated Care** is all about. Researchers with different expertise (nursing and midwifery) join forces to tackle issues such as access to health care, integrated health care systems, multi-disciplinary professional teams and patient oriented care.

The focus of our **Nutrition and Dietetics research** unit is the prevention of overweight and obesity.

We analyze food quality and lifestyle parameters in several settings in order to develop (community) interventions which we deliver by means of nudging techniques, a concept borrowed from behavioral science.

The **Biomedical Science Center Brussels** carries out both in-house and on-demand scientific projects in the disciplines of Biotechnology, Pharmacy and Clinical & Molecular Diagnostics. Current in-house research deals with the following topics:

- the implementation and testing of CRISPR-Case9 genome editing systems in microbes with the goal of understanding these systems, rendering them more user-friendly and/or more performant and providing instruction on them to students and the wider public
- the development of a liposome based nanobody delivery system that specifically targets cancer cells

The Biomedical Science Center Brussels also works on projects in science communication and education. In order to promote the scientific literacy of high school students, we develop low cost DIY-bio STEAM-kits and tools that can readily be used or set up in schools. Additionally, we provide complementary workshops for science teachers and high-school students in the **Open BioLab Brussels**.





# Management, Economy and Tourism

- Associate Degree in Accounting Administration
- Associate Degree in Hospitality Management: Catering, Accommodation & Restaurant
- Associate Degree in Shop Management
- Bachelor in Hotel Management
- Bachelor in Idea & Innovation Management
- Bachelor in Tourism and Leisure Management

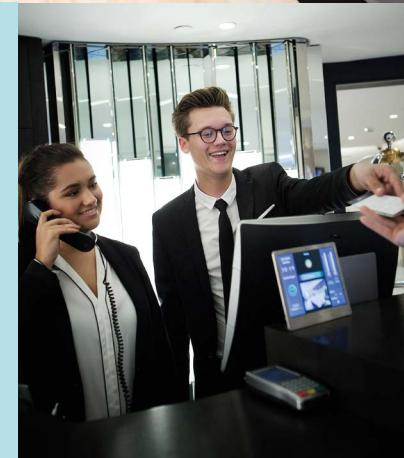
The underlying teaching philosophy in these programs is geared towards **empowering students** as individuals while acquiring **strategic creative and management skills**. The programs have a broad general scope on their field of study, thus preparing students to work in various types of organizations. Students have a wide range of opportunities to go abroad for international events, internships or short projects. **Teamwork** is essential and the curricula are strongly embedded in the professional field through guest lectures, a boot camp and internships.



## Research

**The Center of Expertise Open Time - Applied Futures Research** seeks to open up methods and instruments for futures research for application in diverse domains. Futures thinking is essential for policy and decision making in business, in non-profit organizations and in government. Our multidisciplinary research is set up with the programs Tourism and Recreation Management, Communication Management and Idea & Innovation Management and is currently conducting case studies in the areas of leisure, municipal governance, culture and entertainment.

**The Hotel Management study program** conducts research on the impact and effects of new, innovative and/or potential disruptive developments in the accommodation sector. More specifically, our current research focuses on the strengths and weaknesses of initiatives and platforms that have originated from the so-called 'sharing' or 'peer-to-peer' economy (such as Airbnb). We look into the supply and demand for both the new platforms and the traditional accommodation sector from the perspective of tourists, (local) governments and accommodation suppliers, in order to evaluate the impact on the economy, society and rural and urban planning.





# Social Sciences and Society

- Associate Degree in Information Management: Library and Archives
- Associate Degree in Legal Administrative Support
- Bachelor in Social Work

In our school, choosing a study program within social science stands for **hands-on practical training**. Students will learn through training, exercises, group assignments, visits and, of course, the internship.

Brussels is a **cosmopolitan city** where many cultures and nationalities converge. This offers countless opportunities but also many social challenges – an ideal laboratory for a social worker in training.



# Teacher Training and Early Childhood Education & Care

- Bachelor Early Childhood Education and Care
- Bachelor Preschool Education
- Bachelor Primary Education
- Bachelor Secondary Education



Shaping tomorrow's society requires competent, passionate and dedicated educational professionals. The workplaces of our future teachers and pedagogical coaches offer a window on Brussels, a **multilingual and multicultural metropole** which is a challenge as well as a **source of inspiration**.

Our focus is the particular skill set a teacher or pedagogical coach needs in an **urban context**: intercultural awareness and sensitivity, intercultural communication, teaching multilingual groups, awareness of poverty issues and building a network with different educational, social and cultural organizations in Brussels.

## Research

The Center of Expertise in "Urban Coaching and Education" focuses on aspects of education in a multicultural urban context and wants to explore its strength. Researchers collect evidence-based good practices for professionals in coaching and education with particular focus on aspects of language acquisition and the development of a professional identity. Findings from this research have been incorporated in a course module 'Urban Education' which will be available to international students as of the spring of 2020.

The **Democratic Dialogue** project focuses on coaching any type of school in dealing with issues related to intercultural differences and establishing intercultural dialogue.



# Koninklijk Conservatorium Brussel

- Bachelor in Musical
- Bachelor and Master of Arts in Music
  - Instrument/Voice (including Historically Informed Performance Practice)
  - Jazz & Light Music
  - Conducting
  - Composition
  - Music Writing
- Bachelor in Musical Education
- Master in Music Education

Our Koninklijk Conservatorium Brussel dates back to the late nineteenth century and is an internationally renowned institute for music studies drawing many international students, faculty and guest lecturers from all over the world. Students are only admitted after passing a rigorous admission test. Many of our alumni go on to pursue very successful careers all over the world as soloist, chamber musician, in orchestras or teaching.

We host **many international master classes** and are part of a **large European network of festivals and orchestras**. We conduct both artistic, academic and practice oriented research and take part in EU funded projects either as a partner or coordinator.

We are located in the cultural heart of Brussels in close proximity to Belgium's major music halls, opera house, museums and theatres for the performing arts. Our activities are closely connected to these institutions with which we often collaborate in joint projects.



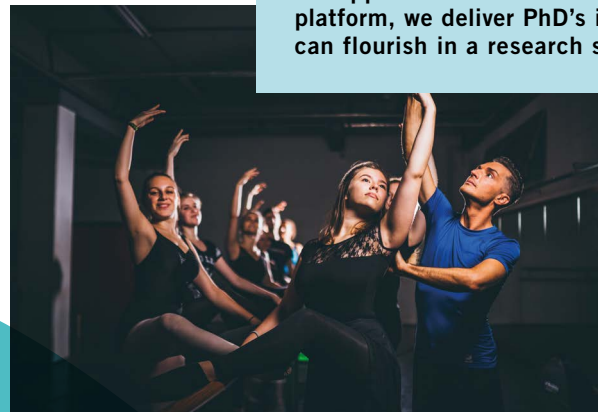
## Research

Our different types of research (artistic, academic, practice based) focus on the following topics: Contemporary Performance Practice, Historically Informed Performance Practice, Musical Language, Artistic Research Practices, Culture, Music and Documentation Sciences and Technical Performing Arts.

Our research activities are fully integrated into our study programs, as we want our educational activities to be research driven. The objective is to educate outstanding expert musicians who are able to reflect critically upon their own musical practice.

Our research output is diverse in nature and includes concerts, musical-performances, CD-recordings, compositions, lecture-recitals, articles in scientific journals, books, etc.

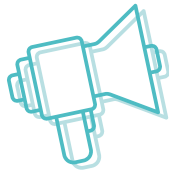
In collaboration with the Vrije Universiteit Brussel (VUB) and our Film, Theatre and Sound Institute RITCS, we have set up the Brussels Arts Platform to support artistic research, in particular at the PhD level. Through this platform, we deliver PhD's in the arts and guarantee that each PhD project can flourish in a research setting specifically designed for the arts.





# RITCS: Royal Institute for Theatre, Cinema and Sound

- Bachelor in Audiovisual Arts
- Bachelor and Master of Arts in Audiovisual Arts
- Bachelor and Master of Arts in Drama
- Bachelor in Audiovisual Education
- Master of Arts in Audiovisual Education
- Master in Drama Education



Numerous well-known Belgian writers, stage actors, stage directors and makers of film, television, documentary, radio and animation from the last half a century have one thing in common: they all studied at our school, RITCS.

The main focus at RITCS is the development of one's own artistic path through which an **individual artistic idiom, style and theme** can emerge. An overarching goal throughout all of our programs is to equip students with the necessary skills to undertake such an artistic quest which lies at the core of any type of artistic research. Most of our courses operate in ways that assume **dialogue among students** themselves and **between students and their artistic teachers**, many of whom are celebrated artists themselves: from tutorials and workshops to studio sessions and master classes. In addition, we offer a number of theoretical courses in philosophy, culture, art, politics, media and society in order to give students a broad general education. These lectures are taught by leading academics to larger groups of students.

An **international perspective** is part and parcel of RITCS' mission statement. This translates into an international policy centered around the knowledge triangle of education, (applied) research and innovation. In order to do so RITCS actively participates in various European networks such as GEECT & CILECT, ELIA and OISTAT.

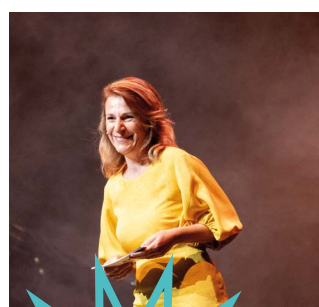
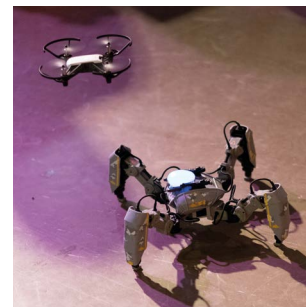
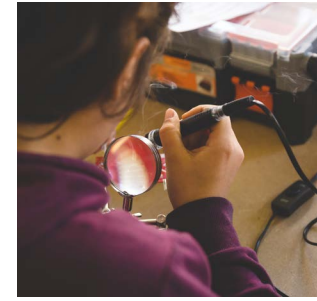
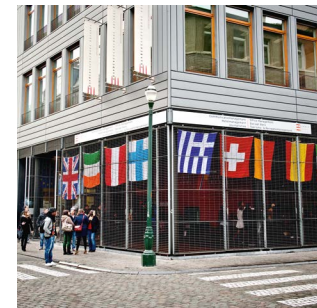
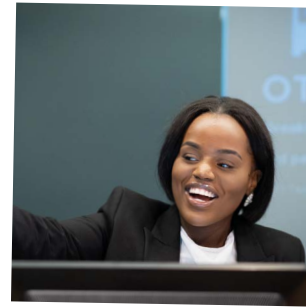


## Research

The main focus of research is on outlines that should make it possible for research to fit in meaningfully with the specific needs of as many study programs as possible.

These overarching, content-related outlines can be summarized in the keywords **digitization, glocalization, and interdisciplinarity**. Within these themes, there is room for two types of research: research into '**art & craft**', which concentrates on the crafty aspects of an art discipline or medium, and research into '**art & society**', in which theory and practice explore the changes in art, media and the world.









# Practice Oriented Research

In order to reinforce our practice oriented research, we established six centers of expertise which also function as scientific service centers that deal with specific requests and inquiries from both the private and public sector.

The topics dealt with are multi-disciplinary and in line with research priorities set by local, national and European policy-makers and funders. The centers of expertise are also directly linked to one or more study programs and their activities generate a continuous added value for those programs.

Thanks to the low-threshold approach of these centers, students can take active involvement in the research process, under the supervision of the research staff, by choosing their bachelor theses topic in line with the centers' research themes or by assisting in contract research or service provision for organizations or enterprises.

Besides practice oriented research carried out by the six centers of expertise, the Schools of Arts also develop academic research in the Arts which can lead to PhD's.

## The six centres of expertise

- Open Time - Applied Futures Research
- Brussels Integrated Care
- Tuin+
- Mobile & Wearable
- Biomedical Science Center Brussels
- Urban Coaching & Education

# Internationalization

All of our programs include the acquisition of international and intercultural skills through various types of activities: study abroad, international traineeships, virtual mobility and internationalization at home. These activities are not random but are carefully embedded throughout each study program.

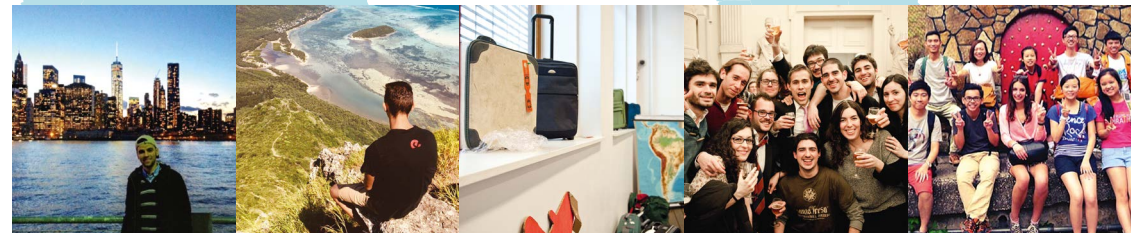
Today, **18%** of our graduates have enjoyed an **international experience**. By 2020, we will certainly reach the EU 20% mobility goal.

Every year we welcome about 60 international students as part of the Erasmus+ mobility program. We would like to increase these numbers and are working on extending our course offerings in English.

Our teaching staff is also encouraged to teach abroad at one of our 200 partner institutions within the Erasmus+ framework.

Our researchers are encouraged to develop their network internationally and engage in international collaboration. We are actively participating in several European Projects and have developed solid cooperation particularly in the North African region.

We are associated with the Vrije Universiteit Brussel (VUB) and are a partner of the Compostela Group of Universities (CGU). All of our departments are active members of various European and international networks.





# Where to find us? Here!

## OUR CAMPUSES IN BRUSSELS AND FLANDERS:

### Design & Technology

Nijverheidskaai 170, 1070 Brussels

### Health Care & Landscape Architecture

Laarbeeklaan 121, 1090 Jette

### Management, Media & Society

Zespenningstraat 70, 1000  
Brussels

### Teacher Training and Early Childhood Education & Care

Slotstraat 28, 1000 Brussel

### Koninklijk Conservatorium Brussel

Regentschapsstraat 30 in 1000  
Brussels

### RITCS | Royal Institute for Theatre, Cinema & Sound

A. Dansaertstraat 70, 1000 Brussels

### Campus De Oranjerie - Leuven

Kolonel Begaultlaan 1A/51, 3012  
Leuven

### Campus De Oranjerie - Diest

Boudewijnvest 3, 3290 Diest

### Campus VOLT – Heverlee

Interleuvenlaan 5, 3001 Heverlee

### Campus Busleyden Atheneum (partner) – Mechelen

Augustijnenstraat 78, 2800  
Mechelen

 [ehb.be/international](https://ehb.be/international)



# Contact

## International Office

Annelore Schittecatte  
Emma De Cocker  
Johan De Sterke  
Hilde Van Lindt

e-mail: [international.office@ehb.be](mailto:international.office@ehb.be)  
tel.: + 32 (0)2 559 15 15 / 14 / 13

## Research Office

Bert De Bisschop  
Lien Mostmans

e-mail: [bert.de.bisschop@ehb.be](mailto:bert.de.bisschop@ehb.be) | [lien.mostmans@ehb.be](mailto:lien.mostmans@ehb.be)  
tel.: + 32 (0)2 559 15 69 81

## Erasmushogeschool Brussel

170 Nijverheidskaai  
B-1070 Brussels | Belgium  
Webpage: [ehb.be/international](http://ehb.be/international)



[www.ehb.be](http://www.ehb.be)



[/erasmushogeschool](https://www.facebook.com/erasmushogeschool)



[@erasmushogeschool](https://www.instagram.com/erasmushogeschool)



[@ehbrussel](https://twitter.com/ehbrussel)



[/ehbrussel](https://www.youtube.com/ehbrussel)



[/school/erasmushogeschool](https://www.linkedin.com/school/erasmushogeschool)

